

Japan Free & Easy Family Retreat Package B



DAY 01 : Tokyo Arrival – Tokyo Bay

Fly from Sydney to Tokyo, upon arrival, transfer to your hotel at Tokyo Bay and stay 3 nights. Hotels with walking distance to Disneyland / DisneySea.

DAY 02 : Tokyo Bay - Disneyland

Enjoy your day at Disneyland

DAY 03 : Tokyo Bay - DisneySea

Enjoy your day at DisneySea

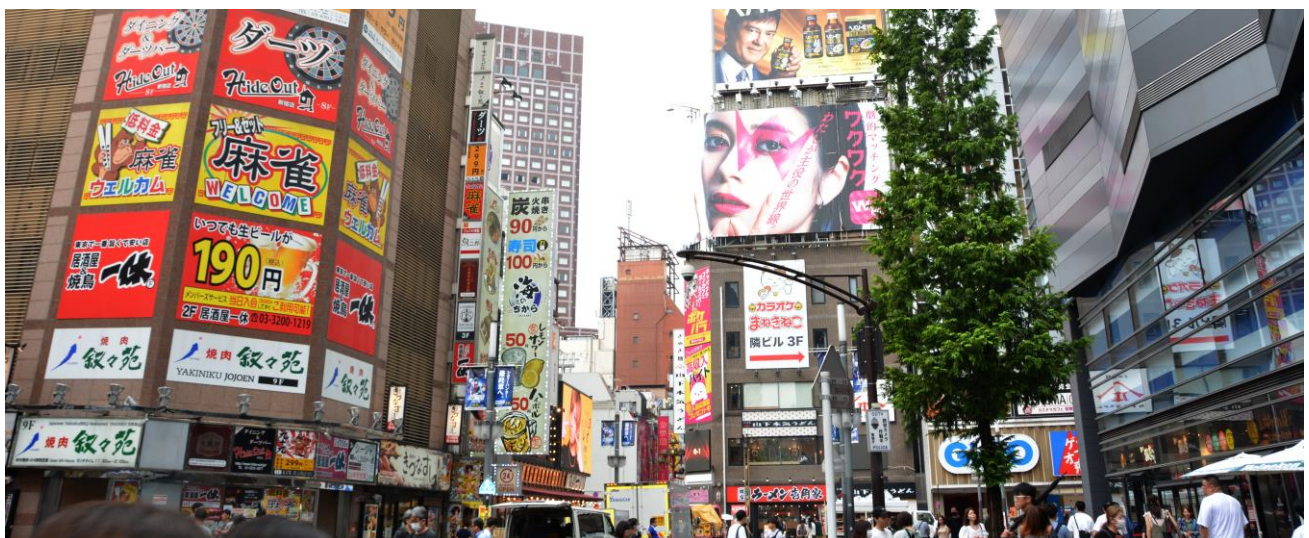
DAY 04 : Tokyo Bay – Tokyo Shinjuku

Check out your hotel and take local train by yourself to hotel at Shinjuku, Tokyo. Stay 5 nights

DAY 05 : Tokyo Day Tour

Tour will depart from Shinjuku JR Station.

Today you will join Seat-in-coach tour to visit Tokyo. Explore the most famous and signature sightseeing spots in Tokyo city. See Tokyo from a different perspective on a water bus. Visit the Imperial Palace, the oldest temple in Tokyo, and Tokyo's old neighborhood of Shibamata, with a guide.



DAY 06 : Tokyo – Free Day

Today is at leisure.

DAY 07 : Tokyo – Mount Fuji Day Tour

Today you will join Seat-in-coach tour to visit world famous Mt Fuji. Tour will depart from Shinjuku JR Station. On this day tour, discover Mount Fuji, one of the world's most famous mountains and a UNESCO World Heritage Site. Explore the Kawaguchi Lake, and Oshino Hakkai nearby Mount Fuji, and see why everyone comes here when they visit Japan.



DAY 08 : Tokyo – Hakone - Tokyo

Today you will join Seat-in-coach tour to visit Hakone Area. Tour will depart from Shinjuku JR. Marvel at the amazing Hakone. Cruise on Lake Ashi and enjoy Mount Fuji. Climb Mt Hakone on a cable car, sightsee around volcanic Ohwakudani, and at the final stop, choose to shop in the Gotemba outlets or try the hot spring with Mount Fuji view. Return to Tokyo at around 6pm.

DAY 09 : Tokyo - Kyoto

This morning is at leisure.

At noon take Shikansan train from Tokyo to Kyoto by yourself. It takes 2.15 hours from Tokyo to Kyoto. Upon arrival, please make your own way to check in hotel. The rest of the day remain free.

DAY 10 : Kyoto – Nara – Day Tour

Today you will take Seat in Coach day tour visit Kyoto and Nara. You will visit Nijo Castle, Kinkaku-ji Temple, Kyoto Imperial Palance, Todai-ji Temple, Nara Park, Kasuga Taisha Shrine.

DAY 11 : Kyoto – Osaka

Today you will take train to Osaka. Check in at hotel for 2 night.



DAY 12 : Osaka – Universal Studio

Enjoy your day at Universal Studio

DAY 13 : Osaka – Departure

Free until transfer to the airport for your flight home bound.